

PLUMBERS INSTALLATION INSTRUCTIONS - INWALL BODY (99098)

Important Information

- * **Brazed connections should not be made directly onto the mixer, as excessive heat will coause permanant damage.**
- * **All pipework must be thoroughly flushed prior to installation.**
- * **Refer to side 2 of this instruction for trim kit installation.**

Installation

- 1) Attach inwall body mounting box (11) to timber noggins as shown (Fig.3) using the 6 off supplied screws (1). Use the integrated level indicator (2) to ensure that the box is mounted **horizontally**.
- 2) Remove cover (3) by unscrewing the 4 off plastic socket screws (4) using the supplied spanner.
- 3) Remove sealing grommet (5). Insert DN15 copper mains supply pipe through grommet, and then insert pipe into box. Assemble compression fitting and make connection with the G1/2 integrated isolation valve (6). After connection has been made, slide sealing grommet back onto mounting box. Ensure that the isolation valve (7) is in the CLOSED POSITION as shown (Fig.1). Open mains supply & check for leaks.
- 4) Connect power supply (8) to a 240VAC, 10A GPO. **Ensure that supply of power has been isolated.**

The power outlet should be located no more than 2.2m from the inwall body box when using the supplied extension cable (9).

Connection points (10) are provided for terminating standard 20mm electrical conduit to the mounting box. Run cable through connection points and into the mounting box .

- 5) Once inwall body installation has been completed, replace & secure mounting box cover (3) using screws (4). Complete lining & tiling process. After tiling is complete, trim excess mounting box tiling flange so that it flush with the finished surface (Fig.2). Re-attach mouting box cover (3) using the screws (4).

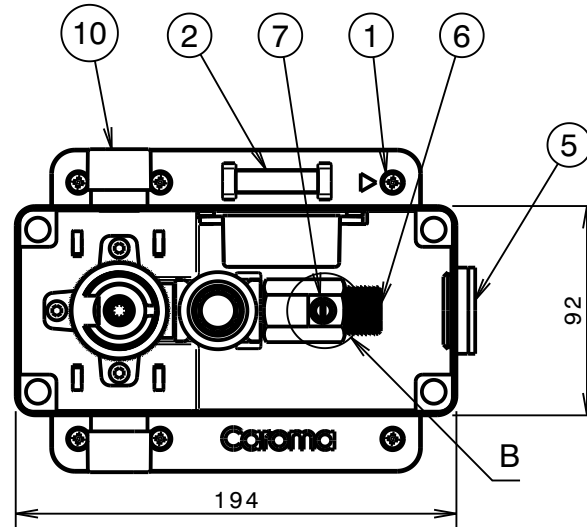
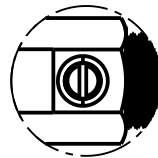


Fig. 1



Detail B
Isolation Valve in closed position

Trim excess mounting box tiling flange after tiling to be flush with surface.

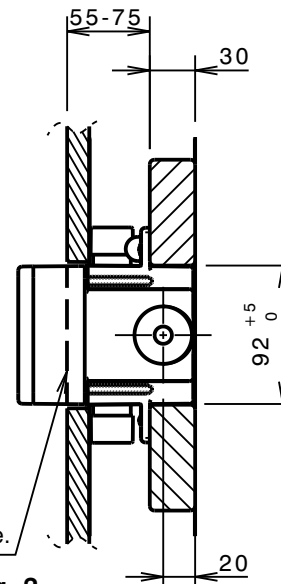


Fig. 2

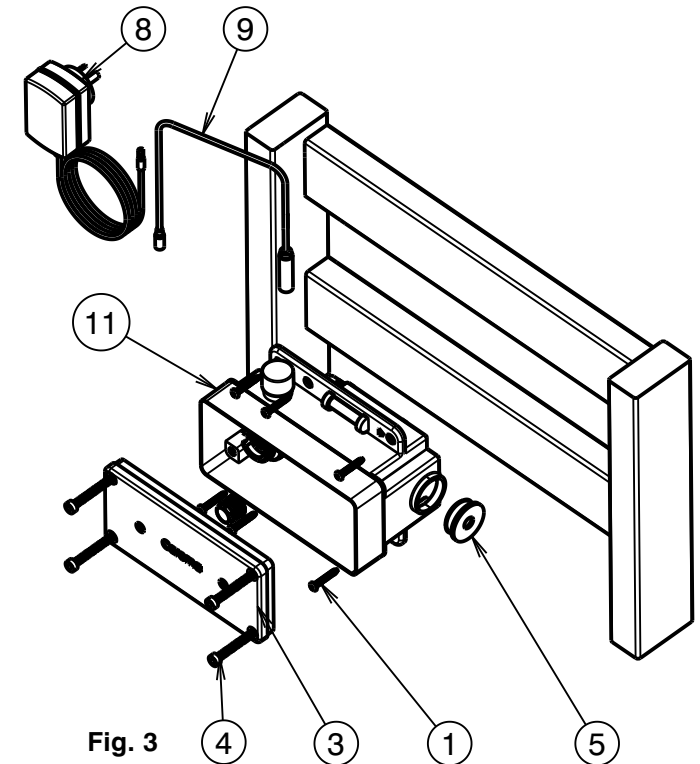


Fig. 3

IMPORTANT

Pressure & Temperature Requirements.

- Static inlet pressure range : 50 -700 kPa
New Regulation :-500 kPa maximum static pressure at any outlet within a building. (Ref. AS/NZS 3500.1)
- Maximum hot water temperature : 80°C.

Installation Requirements.

- The installing plumber is responsible for waterproofing all penetrations for Taps in Shower areas at installation by a proprietary flange system or a sealant. (Ref AS3740)

PLUMBERS INSTALLATION INSTRUCTIONS - TRIM KIT (98451C6A)

Important Information

- * Not suitable for gravity feed systems.
- * Wall outlet is fitted with a flow regulated aerator insert. This low flow rate may not be suitable for connection to some Instantaneous Gas Water Heaters, some Tempering Valves, some Solar Water Heaters & some Thermostatic Mixing Valves. Check with the manufacturers of these products.
- * All pipework must be thoroughly flushed prior to installation, as foreign materials may block the flow regulating device and reduce the flow of water. Note: Aerator insert must be retightened to prevent removal by hand.

Installation

- 1) Remove mounting box cover: Using a 6mm allen key, remove cover retaining screws (6) and cover (5). Ensure that isolation valve is still in the closed position.
- 2) Remove solenoid blanking plug and attach solenoid (1). Note: Lightly tighten only (1 Nm). Open the isolation valve and check for leaks.
- 3) Align & attach outlet spout assembly (2) to outlet spigot (3) with retaining nut (4), ensuring cables do not become jammed or damaged.
- 4) Connect Cables:
(Green + Yellow) to solenoid
(Brown + White) to blue module
Power supply cable to blue module.
Secure cables using the integrated retaining features.
- 5) Slide backing plate (5) over spout assembly and attach to mounting box by re-using the 4 off plastic cover retaining screws (6).
DO NOT OVERTIGHTEN.
Note: Backing plate has integrated gasket to seal against the tile surface.
- 6) Slide fascia plate (7) over spout and attach to backing plate. The fascia plate is attached by lifting slightly (approx 2mm) to allow the mounting tags to engage. Drop the plate and press down lightly to engage with backing plate.
- 7) Slide the rubber seal (8) over the spout and press into fascia plate firmly.
- 8) Slide cover ring (9) and push firmly against the fascia plate.
- 9) Secure grub screw with 2mm allen key underneath.
- 10) **Commissioning Procedure:**
 - a) Power on the device at the GPO and allow the unit to complete the calibration sequence as follows:
 - 1) The indicator LED will flash, then allow a small amount of water to flow to wet surfaces under sensor.
 - 2) The unit will then perform another calibration on the wet surface and flush again.
 - 3) The indicator LED will then flash for 30 seconds and then stop.
 - 4) The unit is now ready to operate.
 - b) Test operation by placing hands under the sensor (within 100mm from Spout). Water should flow within 0.5 seconds.
Remove hand and the water supply should stop within 2 seconds.

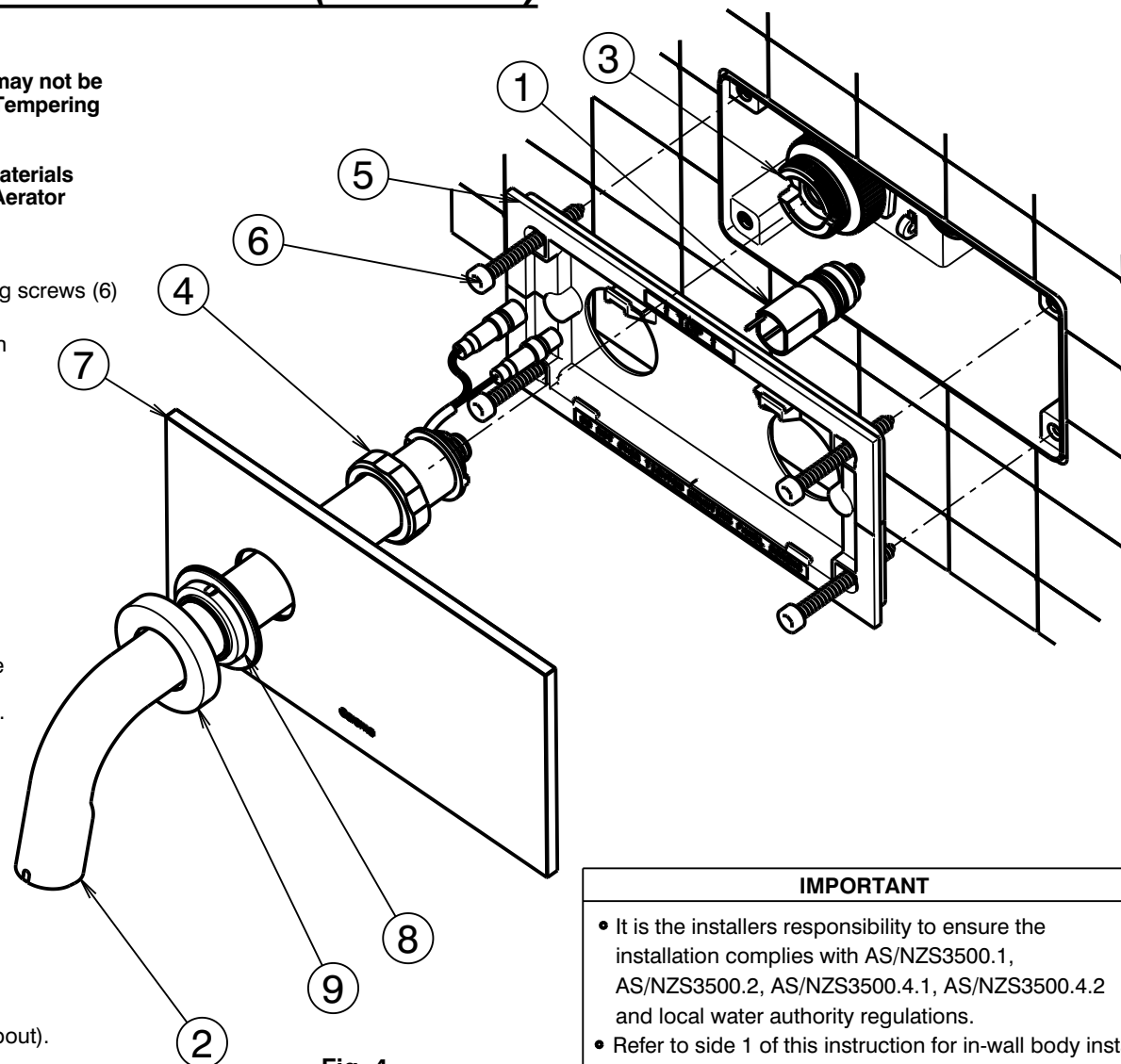


Fig. 4

IMPORTANT

- It is the installers responsibility to ensure the installation complies with AS/NZS3500.1, AS/NZS3500.2, AS/NZS3500.4.1, AS/NZS3500.4.2 and local water authority regulations.
- Refer to side 1 of this instruction for in-wall body installation.

IMPORTANT: Please refer to AWARE operation manual (IS 1683) to configure wireless communication and change the device default settings.