



#### **SPECIFICATION**

Vanity Mounted Automatic Soap Dispenser shall hold 1 L of liquid soap within the viscosity range of 100 – 3800 cP (MPa•s) and dispense in owner programmable stream cycles with volumes of approximately 0.2 ml to 2.3 ml in four (4) steps with remote control programming unit (optional) with factory pre-set at approximately 0.8 ml. Operation is initiated by hands-free sensor controlled by microprocessor digital circuitry powered by an AC Adapter (IP67 rated, provided, select model) located under counter. Unit shall have chrome plated spout and sensor housing with a highly polished finish over all exposed surfaces. Unit shall have LED in sensor to indicate function and battery condition. A self-adhesive label shall be provided for use at owner's option to indicate dispenser function. Tank shall be translucent to show quantity of soap remaining at any time. Tank shall be disengaged and engaged into pump/control housing under counter by manually unscrewing to allow refilling and threading back up into pump/control housing to retain for operation. Unit shall mount on vanity deck through 25mm diameter hole minimum to 32mm max. Owner's Manual and Installation Guide (OM & IG) shall be provided with unit in carton.

#### **INSTALLATION**

Mount spout and sensor housing to vanity with rubber washers and basin nut (supplied) through 28.5mm diameter mounting hole in counter top (by others). Mount pump/control housing with bottle support bracket using screws (provided) to convenient location under vanity within 30" (76 cm) of bottom of shank. Connect soap tube threaded fitting to locking nut on top of pump/control housing. Connect spout control cable plug into control unit inline cable connector. Plug AC Adapter into GFCI power outlet located under vanity within 412cm of pump/control housing and plug connector into mating inline power connector. Fill tank with appropriate viscosity non-abrasive soap to correct level and screw into pump/control housing to retain for operation.

#### **SOAP REQUIREMENTS**

Proper usage of this dispenser requires, that only soap within the following range for viscosity and pH may be used:

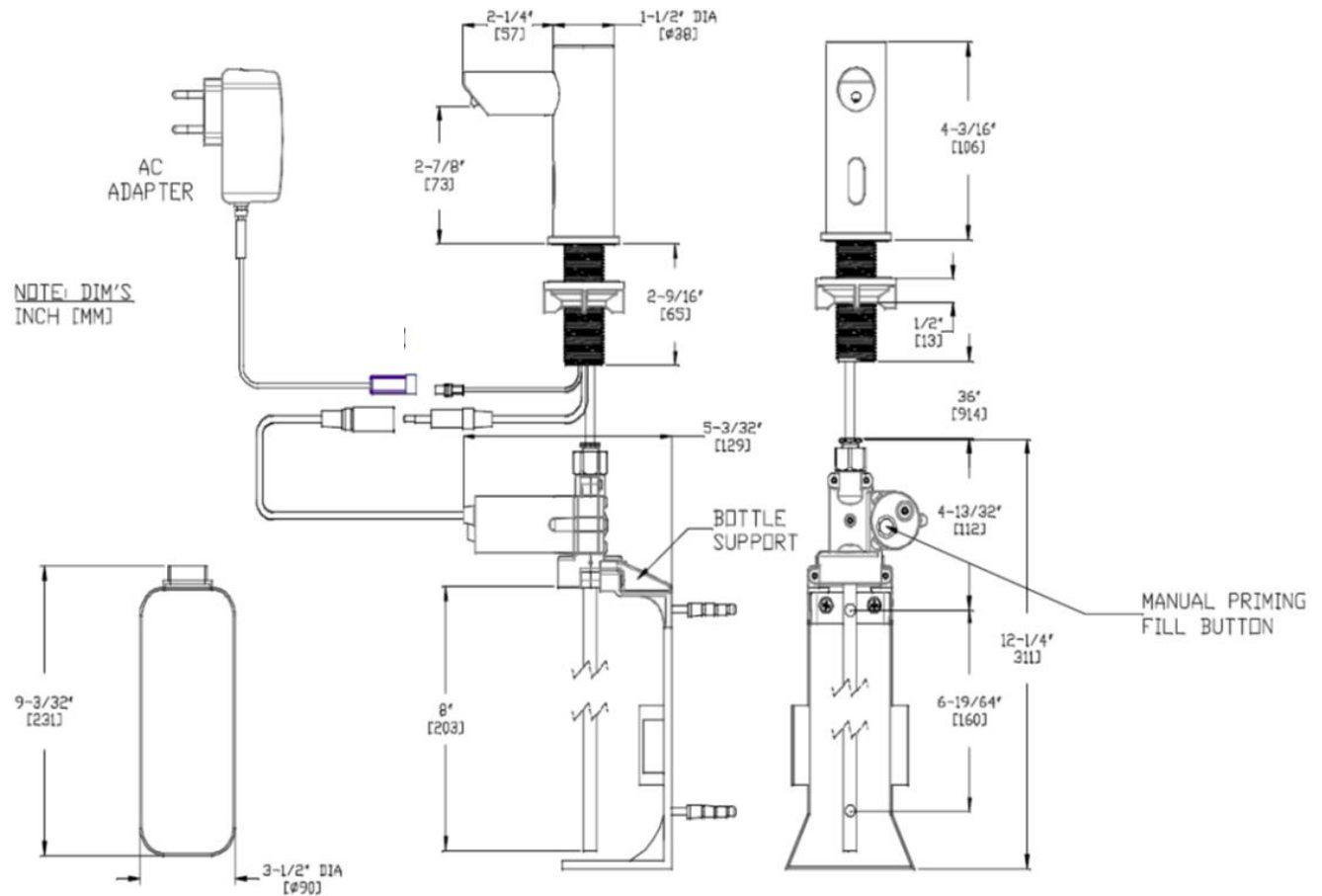
- Viscosity Range (mPa•s or cP): 100 – 3800
- pH Range: 5.5 ~ 8.5

#### **OPERATION**

Unit shall operate each time an object is positioned within the sensing range of 30 to 100 ± 10mm directly in front of the spout. A stream of liquid soap drops with total dispense amount of 0.8 ml will be pumped from the nozzle during each activation. Optional remote control unit Model № 10-0390-R (order separately) will allow owner programming of alternate dispense amounts. See Model № 10-0390-R Specification Sheet and Owner's Manual for complete description of functions. Unit will dispense soap while correct viscosity soap is present in the tank and system is correctly maintained to enable dispensing (red LED is not flashing continuously or does not emit any flash at all). LED will display red flash for sensing. Push button releases soap for easy soap priming. Soap is manually replenished on service interval determined by maintenance schedule.

#### **WARRANTY**

2 years.



**Hands Free Hygiene**

Ph: 1800 039 764

sales@handsfreehygiene.com.au

handsfreehygiene.com.au