

Electronic Wall-mounted Tap  
6-star 2.5lpm

STS2500BM-2

Electronic single temperature wall-mounted tap - battery and mains powered

Technical information

Material	DZR Brass/ Plastic-solenoid valve
Inlet valve	15mm flexible connection
Outlet	M20 aerator
Working pressure	50kpa - 500kpa
Max. operating temp.	50°C
Valve	6 volt solenoid (15mm connection)
Finish	Chrome-plated
Servicing	Regular maintenance
Warranty	2 years*

Product features

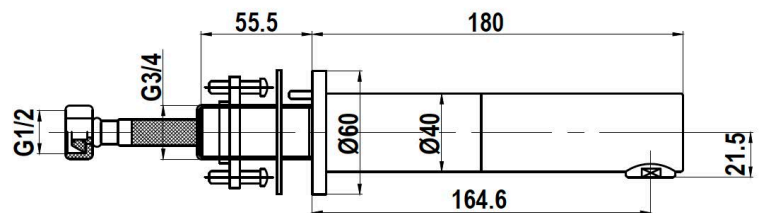
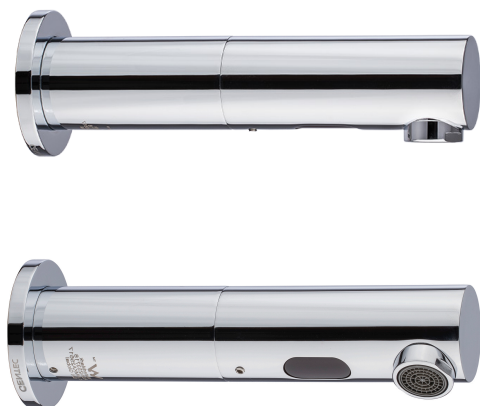
- Run time, sensitivity and dead flush are programmable by remote control
- Extension leads available
- Supplied with an inlet strainer and flow controller
- Digital sensor technology
- IP rated control box enclosure houses the solenoid valve and waterproof connections
- Both battery and mains options available (Configuration can be changed following installation)
- Simple installation
- Recommended for all projects

Product standards and Certifications



WELS Registration Number: TM38056

See page 2



All measurements are in millimetres and should be used as a guide only

Hands Free Hygiene

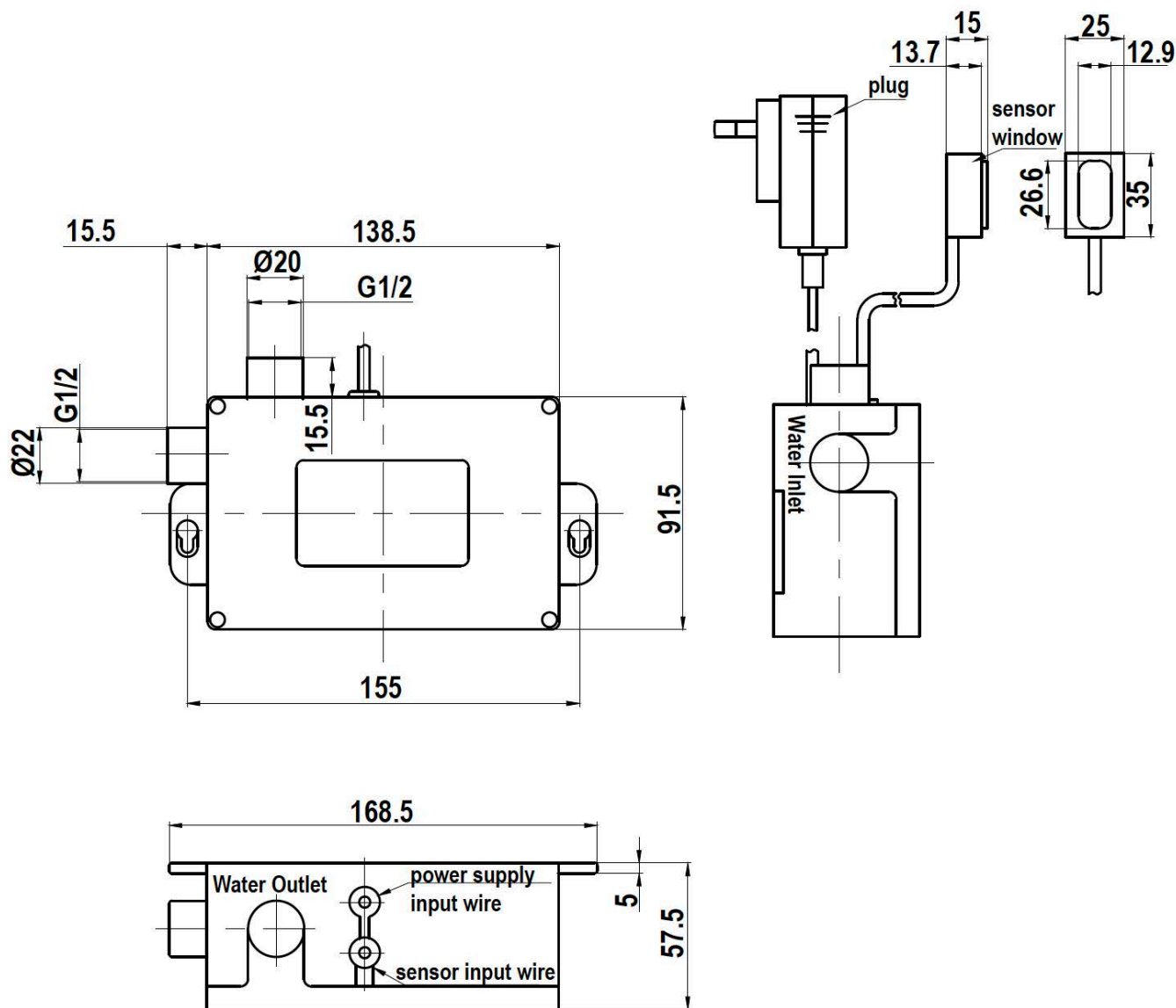
Ph: 1800 039 764

sales@handsfreehygiene.com.au

handsfreehygiene.com.au

Related products	
STS2500B-2	Electronic single temperature wall mounted tap - battery powered
STS2500M-2	Electronic single temperature wall mounted tap - mains powered

Power Box Line Drawing



**Hands Free Hygiene**

Ph: 1800 039 764

[sales@handsfreehygiene.com.au](mailto:sales@handsfreehygiene.com.au)

[handsfreehygiene.com.au](http://handsfreehygiene.com.au)

All measurements are in millimetres and should be used as a guide only